

## Certificate of Analysis

Third-party lab test results to confirm the purity and safety of our hemp extract.

As part of our commitment to transparency, we're making every effort to produce the purest CBD oil in the safest way possible. Every batch of our product must meet the toughest industry requirements before we offer it to you.

Our products come with a Certificate of Analysis. This certificate verifies third-party testing has been completed by an accredited laboratory who specializes in testing CBD oil.

### SOULSOME Batch #012422

**Total CBD 2.555%**  
 ((CBDA\*0.877)+CBD)



**Total THC 0.087%**  
 ((THCA\*0.877)+Δ9THC)



**Total CBG 0.99%**  
 ((CBGA\*0.877)+CBG)



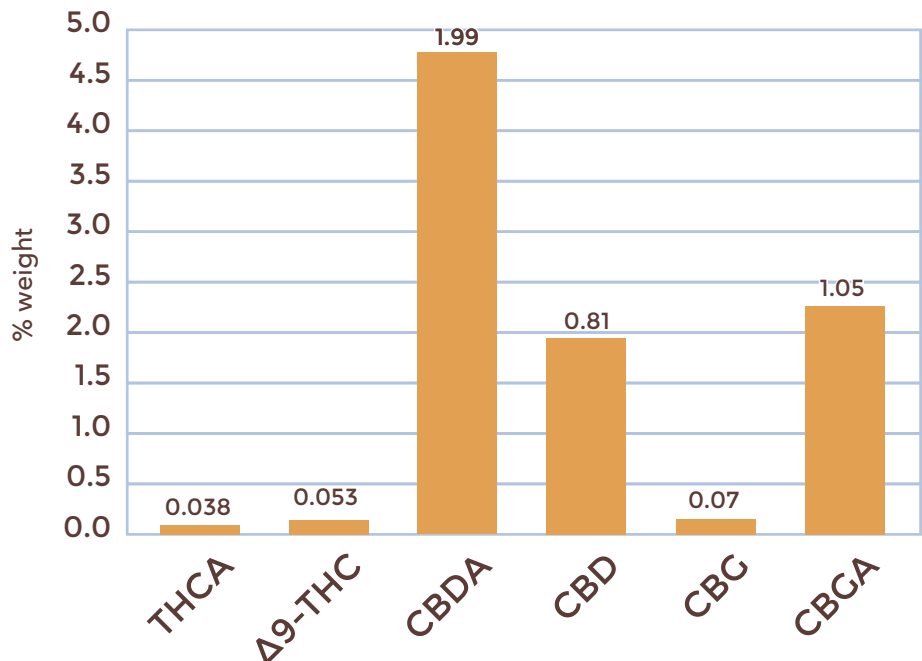
**Heavy Metals Test Passed**



**Pesticide Test Passed**



**Microbiology Tests Passed**



We hope these detailed lab test results give you confidence that our CBD oil is not only safe but is made the way nature intended.



# Certificate of Analysis

Compliance Test

**SOULSOME INC**  
9791 IRVINE CENTER DR STE B 2N  
IRVINE, CA 92618

Batch # 012422  
Batch Date: 2022-02-08

Sampling Method: MSP 7.3.1  
Test Reg State: Florida

Order # SOU220208-020001  
Lab Date: 2022-02-08  
Sample # AACL476

Sampling Date: 2022-02-11  
Lab Batch Date: 2022-02-11  
Completion Date: 2022-02-14

Initial Gross Weight: 95.138 g  
Net Weight: 27.705 g  
Density: 0.973 g/ml

Number of Units: 1  
Net Weight per Unit: 29574.000 mg



Product Image

<b>Potency Tested</b>	<b>Terpenes Tested</b>	<b>Heavy Metals Passed</b>	<b>Mycotoxins Passed</b>	<b>Pesticides Passed</b>
<b>Residual Solvents Passed</b>	<b>Listeria Monocytogenes Passed</b>	<b>Pathogenic Passed</b>		

## Potency - 11

Specimen Weight: 105.230 mg

Analyte	Dilution (1:n)	LOD (%)	LOQ (%)	Result (mg/ml)	(%)
CBDA	100.000	0.00001	0.001	19.363	1.990
CBGA	100.000	0.00008	0.001	10.217	1.050
CBD	10.000	0.000054	0.001	7.981	0.810
CBG	10.000	0.000248	0.001	0.676	0.070
CBC	10.000	0.000018	0.001	0.550	0.057
Delta-9 THC	10.000	0.000013	0.001	0.519	0.053
THCA-A	10.000	0.000032	0.001	0.370	0.038
THCV	10.000	0.000007	0.001	<LOQ	
Delta-8 THC	10.000	0.000026	0.001	<LOQ	
CBN	10.000	0.000014	0.001	<LOQ	
CBDV	10.000	0.000065	0.001	<LOQ	

## Tested (LCUV)

## Potency Summary

<b>Total THC</b> 0.087% 25.729mg	<b>Total CBD</b> 2.555% 755.616mg
<b>Total CBG</b> 0.990% 292.783mg	<b>Total CBN</b> None Detected
<b>Other Cannabinoids</b> 0.057% 16.857mg	<b>Total Cannabinoids</b> 3.689% 1,090.985mg

## Terpenes Summary

Analyte	Result (mg/g)	(%)
Sabinene Hydrate	1.399	0.14%
Isoborneol	0.025	0.002%

**Total Terpenes: 0.142%**

Detailed Terpenes Analysis is on the following page

*Xueli Gao*  
Xueli Gao Lab Toxicologist  
Ph.D., DABT

*Aixia Sun*  
Aixia Sun Lab Director/Principal Scientist  
D.H.Sc., M.Sc., B.Sc., MT (AAB)



Definitions and Abbreviations used in this report: \*Total CBD = CBD + (CBD-A \* 0.877), \*Total CBDV = CBDV + (CBDVA \* 0.87), \*Total THC = THCA-A \* 0.877 + Delta 9 THC, \*Total THCV = THCV + (THCVA \* 0.87), \*CBG Total = (CBGA \* 0.877) + CBG, \*CBN Total = (CBNA \* 0.877) + CBN, \*Total CBC = CBC + (CBCA \* 0.877), \*Total THC-O-Acetate = Delta 8 THC-O-Acetate + Delta 9 THC-O-Acetate, \*Other Cannabinoids Total = Total Cannabinoids - All the listed cannabinoids on the summary section, \*Total Detected Cannabinoids = Delta8-THC + Total CBN + CBT + Delta8-THCV + Total CBG + Total CBD + Total THCV + CBL + Total THC + Total CBC + Total CBDV + Delta10-THC + Total THC-O-Acetate. \*Analyte Details above show the Dry Weight Concentrations unless specified as 12% moisture concentration. (mg/ml) = Milligrams per Milliliter, LOQ = Limit of Quantitation, LOD = Limit of Detection, Dilution = Dilution Factor (ppt) = Parts per Billion, (%) = Percent, (cfu/g) = Colony Forming Unit per Gram (cfu/g) = Colony Forming Unit per Gram, LOD = Limit of Detection, (ug/g) = Microgram per Gram (ppm) = Parts per Million, (ppm) = (ug/g), (aw) = aw (area ratio) = Area Ratio, (mg/Kg) = Milligram per Kilogram, \*Measurement of Uncertainty = +/- 10%

This report shall not be reproduced, without written approval, from ACS Laboratory. The results of this report relate only to the material or product analyzed. Test results are confidential unless explicitly waived otherwise. Accredited by a third-party accrediting body as a competent testing laboratory pursuant to ISO/IEC 17025 of the International Organization for Standardization.



License No. 800025015  
FL License # CMTL-0003  
CLIA No. 10D1094068

# Certificate of Analysis

## Compliance Test

**SOULSOME INC**  
9791 IRVINE CENTER DR STE B 2N  
IRVINE, CA 92618

Batch # 012422  
Batch Date: 2022-02-08

Sampling Method: MSP 7.3.1  
Test Reg State: Florida

Order # SOU220208-020001  
Order Date: 2022-02-08  
Sample # AA476

Sampling Date: 2022-02-11  
Lab Batch Date: 2022-02-11  
Completion Date: 2022-02-14

Initial Gross Weight: 95.138 g  
Net Weight: 27.705 g  
Density: 0.973 g/ml

Number of Units: 1  
Net Weight per Unit: 29574.000 mg



### Terpenes

Specimen Weight: 58.060 mg

Tested  
(GC/GCMS)

Dilution Factor: 20.000

Analyte	LOQ (%)	Result (mg/g)	(%)	Analyte	LOQ (%)	Result (mg/g)	(%)
Sabinene Hydrate	0.002	1.399	0.140	(R)-(+)-Limonene	0.002	<LOQ	<LOQ
Isoborneol	0.002	0.025	0.002	beta-Myrcene	0.002	<LOQ	<LOQ
(+)-Cedrol	0.002	<LOQ	<LOQ	3-Carene	0.002	<LOQ	<LOQ
Nerol	0.002	<LOQ	<LOQ	alpha-Bisabolol	0.002	<LOQ	<LOQ
Geranyl acetate	0.002	<LOQ	<LOQ	alpha-Cedrene	0.002	<LOQ	<LOQ
Guaiol	0.002	<LOQ	<LOQ	alpha-Humulene	0.002	<LOQ	<LOQ
Hexahydrothymol	0.002	<LOQ	<LOQ	alpha-Phellandrene	0.002	<LOQ	<LOQ
Isopulegol	0.002	<LOQ	<LOQ	alpha-Pinene	0.002	<LOQ	<LOQ
Linalool	0.002	<LOQ	<LOQ	alpha-Terpinene	0.002	<LOQ	<LOQ
Ocimene	0.000	<LOQ	<LOQ	beta-Pinene	0.002	<LOQ	<LOQ
Gamma-Terpinene	0.002	<LOQ	<LOQ	Fenchone	0.002	<LOQ	<LOQ
Pulegone	0.002	<LOQ	<LOQ	Borneol	0.004	<LOQ	<LOQ
Sabinene	0.002	<LOQ	<LOQ	Camphene	0.002	<LOQ	<LOQ
Terpinolene	0.002	<LOQ	<LOQ	Camphors	0.006	<LOQ	<LOQ
Total Terpeneol	0.001	<LOQ	<LOQ	Caryophyllene oxide	0.002	<LOQ	<LOQ
trans-Caryophyllene	0.002	<LOQ	<LOQ	cis-Nerolidol	0.002	<LOQ	<LOQ
trans-Nerolidol	0.002	<LOQ	<LOQ	Eucalyptol	0.002	<LOQ	<LOQ
Geraniol	0.002	<LOQ	<LOQ	Farnesene	0.002	<LOQ	<LOQ
Fenchyl Alcohol	0.002	<LOQ	<LOQ	Valencene	0.002	<LOQ	<LOQ

Total Terpenes: 0.142%



### Mycotoxins

Specimen Weight: 174.500 mg

Passed  
(LCMS)

### Heavy Metals

Specimen Weight: 247.700 mg

Passed  
(ICP-MS)

Dilution Factor: 8.596

Analyte	LOQ (ppb)	Action Level (ppb)	Result (ppb)	Analyte	LOQ (ppb)	Action Level (ppb)	Result (ppb)	Analyte	LOQ (ppb)	Action Level (ppb)	Result (ppb)
Aflatoxin B1	6	20	<LOQ	Aflatoxin G2	6	20	<LOQ	Arsenic (As)	100	1500	<LOQ
Aflatoxin B2	6	20	<LOQ	Ochratoxin A	12	20	<LOQ	Cadmium (Cd)	100	500	<LOQ
Aflatoxin G1	6	20	<LOQ					Lead (Pb)	100	500	<LOQ
								Mercury (Hg)	100	3000	<LOQ

Xueli Gao  
Ph.D., DABT  
Lab Toxicologist

Aixia Sun  
D.H.Sc., M.Sc., B.Sc., MT (AAB)  
Lab Director/Principal Scientist



Definitions and Abbreviations used in this report: \*Total CBD = CBD + (CBD-A \* 0.877), \*Total CBDV = CBDV + (CBDVA \* 0.87), \*Total THC = THCA-A \* 0.877 + Delta 9 THC, \*Total THCV = THCV + (THCVA \* 0.87), \*CBG Total = (CBGA \* 0.877) + CBG, \*CBN Total = (CBNA \* 0.877) + CBN, \*Total CBC = CBC + (CBCA \* 0.877), \*Total THC-O-Acetate = Delta 8 THC-O-Acetate + Delta 9 THC-O-Acetate, \*Other Cannabinoids Total = Total Cannabinoids - All the listed cannabinoids on the summary section, \*Total Detected Cannabinoids = Delta 8-THC + Total CBN + CBT + Delta 8-THCV + Total CBG + Total CBD + Total THCV + CBL + Total THC + Total CBC + Total CBDV + Delta 10-THC + Total THC-O-Acetate, \*Analyte Details above show the Dry Weight Concentrations unless specified as 12% moisture concentration. (mg/ml) = Milligrams per Milliliter, LOQ = Limit of Quantitation, LOD = Limit of Detection, Dilution = Dilution Factor (ppb) = Parts per Billion, (%) = Percent, (cfu/g) = Colony Forming Unit per Gram (cfu/g) = Colony Forming Unit per Gram, LOD = Limit of Detection, (µg/g) = Microgram per Gram (ppm) = Parts per Million, (ppm) = (µg/g), (aw) = aw (area ratio) = Area Ratio, (mg/Kg) = Milligram per Kilogram, \*Measurement of Uncertainty = +/- 10%

This report shall not be reproduced, without written approval, from ACS Laboratory. The results of this report relate only to the material or product analyzed. Test results are confidential unless explicitly waived otherwise. Accredited by a third-party accrediting body as a competent testing laboratory pursuant to ISO/IEC 17025 of the International Organization for Standardization.



License No. 800025015  
FL License # CMTL-0003  
CLIA No. 10D1094068

# Certificate of Analysis

## Compliance Test

**SOULSOME INC**  
9791 IRVINE CENTER DR STE B 2N  
IRVINE, CA 92618

Batch # 012422  
Batch Date: 2022-02-08

Sampling Method: MSP 7.3.1  
Test Reg State: Florida

Order # SOU220208-020001  
Order Date: 2022-02-08  
Sample # AACL476

Sampling Date: 2022-02-11  
Lab Batch Date: 2022-02-11  
Completion Date: 2022-02-14

Initial Gross Weight: 95.138 g  
Net Weight: 27.705 g  
Density: 0.973 g/ml

Number of Units: 1  
Net Weight per Unit: 29574.000 mg



### Pesticides FL V4

Specimen Weight: 174.500 mg

**Passed**  
(LCMS/GCMS)



### Residual Solvents - FL (CBD)

Specimen Weight: 9.800 mg

**Passed**  
(GCMS)

Dilution Factor: 8.596

Analyte	LOQ (ppb)	Action Level (ppb)	Result (ppb)	Analyte	LOQ (ppb)	Action Level (ppb)	Result (ppb)
Abamectin	28.23	300	<LOQ	Fludioxonil	48	3000	<LOQ
Acephate	30	3000	<LOQ	Hexythiazox	30	2000	<LOQ
Acequinocyl	48	2000	<LOQ	Imazalil	30	100	<LOQ
Acetamiprid	30	3000	<LOQ	Imidacloprid	30	3000	<LOQ
Aldicarb	30	100	<LOQ	Kresoxim Methyl	30	1000	<LOQ
Azoxystrobin	10	3000	<LOQ	Malathion	30	2000	<LOQ
Bifenazate	30	3000	<LOQ	Metaxyl	10	3000	<LOQ
Bifenthrin	30	500	<LOQ	Methiocarb	30	100	<LOQ
Boscalid	10	3000	<LOQ	Methomyl	30	100	<LOQ
Captan	30	3000	<LOQ	methyl-Parathion	10	100	<LOQ
Carbaryl	10	500	<LOQ	Mevinphos	10	100	<LOQ
Carbofuran	10	100	<LOQ	Myclobutanil	30	3000	<LOQ
Chlorantranilprole	10	3000	<LOQ	Naled	30	500	<LOQ
Chlordane	10	100	<LOQ	Oxamyl	30	500	<LOQ
Chlorfenapyr	30	100	<LOQ	Paclbutrazol	30	100	<LOQ
Chlormequat Chloride	10	3000	<LOQ	Pentachloronitrobenzene	10	200	<LOQ
Chlorpyrifos	30	100	<LOQ	Permethrin	30	1000	<LOQ
Clofentazine	30	500	<LOQ	Phosmet	30	200	<LOQ
Coumaphos	48	100	<LOQ	Piperonylbutoxide	30	3000	<LOQ
Cyfluthrin	30	1000	<LOQ	Prallethrin	30	400	<LOQ
Cypermethrin	30	1000	<LOQ	Propiconazole	30	1000	<LOQ
Daminozide	30	100	<LOQ	Propoxur	30	100	<LOQ
Diazinon	30	200	<LOQ	Pyrethrins	30	1000	<LOQ
Dichlorvos	30	100	<LOQ	Pyridaben	30	3000	<LOQ
Dimethoate	30	100	<LOQ	Spinetoram	10	3000	<LOQ
Dimethomorph	48	3000	<LOQ	Spinosad	30	3000	<LOQ
Ethoprophos	30	100	<LOQ	Spiromesifen	30	3000	<LOQ
Etofenprox	30	100	<LOQ	Spirotetramat	30	3000	<LOQ
Etoxazole	30	1500	<LOQ	Spiroxamine	30	100	<LOQ
Fenhexamid	10	3000	<LOQ	Tebuconazole	30	1000	<LOQ
Fenoxycarb	30	100	<LOQ	Thiacloprid	30	100	<LOQ
Fenpyroximate	30	2000	<LOQ	Thiamethoxam	30	1000	<LOQ
Fipronil	30	100	<LOQ	Trifloxystrobin	30	3000	<LOQ
Fonicamid	30	2000	<LOQ				

Dilution Factor: 1.000

Analyte	LOQ (ppm)	Action Level (ppm)	Result (ppm)	Analyte	LOQ (ppm)	Action Level (ppm)	Result (ppm)
1,1-Dichloroethene	0.16	8	<LOQ	Heptane	1.39	5000	<LOQ
1,2-Dichloroethane	0.04	5	<LOQ	Hexane	1.17	290	<LOQ
Acetone	2.08	5000	<LOQ	Isopropyl alcohol	1.39	500	<LOQ
Acetonitrile	1.17	410	<LOQ	Methanol	0.69	3000	<LOQ
Benzene	0.02	2	<LOQ	Methylene chloride	2.43	600	<LOQ
Butanes	2.5	2000	<LOQ	Pentane	2.08	5000	<LOQ
Chloroform	0.04	60	<LOQ	Propane	5.83	2100	<LOQ
Ethanol	2.78	5000	<LOQ	Toluene	2.92	890	<LOQ
Ethyl Acetate	1.11	5000	<LOQ	Total Xylenes	2.92	2170	<LOQ
Ethyl Ether	1.39	5000	<LOQ	Trichloroethylene	0.49	80	<LOQ
Ethylene Oxide	0.1	5	<LOQ				



### Pathogenic SAE (qPCR)

Specimen Weight: 235.700 mg

**Passed**  
(qPCR)

Dilution Factor: 1.000

Analyte	Action Level (cfu/g)	Result (cfu/g)	Analyte	Action Level (cfu/g)	Result (cfu/g)
Aspergillus (Flavus, Fumigatus, Niger, Terreus)	1	Absence in 1g	Salmonella	1	Absence in 1g
E.Coli	1	Absence in 1g			



### Listeria Monocytogenes

Specimen Weight: 987.700 mg

**Passed**  
(qPCR)

Dilution Factor: 1.000

Analyte	Action Level (cfu/g)	Result
Listeria Monocytogenes	1	Absence in 1g

Xueli Gao Lab Toxicologist  
Ph.D., DABT

Aixia Sun Lab Director/Principal Scientist  
D.H.Sc., M.Sc., B.Sc., MT (AAB)



Definitions and Abbreviations used in this report: \*Total CBD = CBD + (CBD-A \* 0.877), \*Total CBDV = CBDV + (CBDVA \* 0.87), \*Total THC = THCA-A \* 0.877 + Delta 9 THC, \*Total THCV = THCV + (THCVA \* 0.87), \*CBG Total = (CBGA \* 0.877) + CBG, \*CBN Total = (CBNA \* 0.877) + CBN, \*Total CBC = CBC + (CBCA \* 0.877), \*Total THC-O-Acetate = Delta 8 THC-O-Acetate + Delta 9 THC-O-Acetate, \*Other Cannabinoids Total = Total Cannabinoids - All the listed cannabinoids on the summary section, \*Total Detected Cannabinoids = Delta 8-THC + Total CBN + CBT + Delta 8-THCV + Total CBG + Total CBD + Total THCV + CBL + Total THC + Total CBC + Total CBDV + Delta 10-THC + Total THC-O-Acetate, \*Analyte Details above show the Dry Weight Concentrations unless specified as 12% moisture concentration. (mg/ml) = Milligrams per Milliliter, LOQ = Limit of Quantitation, LOD = Limit of Detection, Dilution = Dilution Factor (ppb) = Parts per Billion, (%) = Percent, (cfu/g) = Colony Forming Unit per Gram (cfu/g) = Colony Forming Unit per Gram, LOD = Limit of Detection, (µg/g) = Microgram per Gram (ppm) = Parts per Million, (ppm) = (µg/g), (aw) = aw (area ratio) = Area Ratio, (mg/Kg) = Milligram per Kilogram, \*Measurement of Uncertainty = +/- 10%

This report shall not be reproduced, without written approval, from ACS Laboratory. The results of this report relate only to the material or product analyzed. Test results are confidential unless explicitly waived otherwise. Accredited by a third-party accrediting body as a competent testing laboratory pursuant to ISO/IEC 17025 of the International Organization for Standardization.